



NEW!

ENGINE

Model	: ISUZU 6HK1XBSW-02S
Type	: Water-cooled, 4 cycle, 6 cylinders, line type direct injection, turbocharger, intercooler, electronic diesel engine
Power	: 281 HP (210 kW) @1900 rpm / SAE J1995 (Gross)
Max. Torque	: 1080 Nm @1500 rpm (Gross)
Displacement	: 7790 cc
Bore and Stroke	: 115 mm x 125 mm
Emission Class	: EU: Stage V

UNDERCARRIAGE

Hydraulic expandable frame / Hydraulic adjustable undercarriage	
Shoe	: 3 grouser
No. Of Shoes	: 2 x 51
No. Of Lower Rollers	: 2 x 9
No. Of Upper Rollers	: 2 x 2
Track Tensioning	: Hydraulic Spring Tensioning

CAB

- Improved operator's all round visibility
- Increased cabin internal space
- Use of six viscomount cabin mountings that dampen the vibrations
- High capacity A/C
- High resolution, led backlight, color LCD display
- Opera Control System
- Cooled storage room
- Glass holder, book and object storage pockets
- Pool type floor mat
- Improved operator's comfort through versatile adjustable seat
- Ergonomically redesigned cabin through relocated switch board, and re-styled travel pedals and joysticks.

TRAVEL AND BRAKERS

Travel	: Fully hydrostatic
Travel Motors	: Axial piston type
Reduction	: 2 stage planetary gear
Travel Speed	
High Speed	: 5,0 km/h
Low Speed	: 2,9 km/h
Max. Drawbar Pull	: 28.250 kgf
Gradeability	: 31° (%60)
Parking Brake	: Hydraulic multi disc type
Ground pressure	: 0,98 kgf/cm ²

LUBRICATION

Centralized lubrication system is provided for lubrication all difficult-to-reach parts on the components, such as boom and arm

HYDRAULIC SYSTEM

Main Pump	
Type	: Double variable displacement axial piston pumps
Max. Flow	: 2 x 300 L/min
Pilot Pump	: Gear, 29,5 L/min
Relief Valves	
Attachment	: 350 kgf/cm ²
Power Boost	: 380 kgf/cm ²
Travel	: 350 kgf/cm ²
Swing	: 285 kgf/cm ²
Pilot	: 40 kgf/cm ²
Cylinders	
Main Boom	: 2 x ø 150 x ø 105 x 1510 mm
Stick Cylinder	: 1 x ø 170 x ø 120 x 1735 mm
Bucket Cylinder	: 1 x ø 120 x ø 85 x 1.060 mm
Middle Arm 1	: 1x ø 170 x ø 120 x 1.735 mm
Middle Arm 2	: 1x ø 150 x ø 110 x 1.280 mm

OPERA CONTROL SYSTEM

- Easy-to-use control panel and menu
- Improved fuel economy and productivity
- Maximum efficiency by selection of power and work modes
- Overheat prevention and protection system without interrupting the work
- Automatic powerboost switch-on and switch-off
- Automatic electric power-off
- Maintenance information and warning systek
- Error mode registry and warning system
- Ability to adjust hydraulic flow from Opera screen
- Maintenance information and warning system
- Automatic powershift to improve performance
- Selection of multi-language on control panel.
- Real time monitoring of operational parameters such as pressure, temperature, engine load
- Anti-theft system with personal code
- Possibility to register 26 different operating hours
- Rear-view, arm-view camera
- Hidromek Smartlink

SWING SYSTEM

Swing Motor	: Axial piston type integrated with shock absorber valves
Reduction	: 2 stage planetary type
Swing Brakes	: Hydraulic multi disc type, automatic warnings
Swing Speed	: 9,2 rpm

CAPACITY

Fuel Tank	: 565 L	Engine Oil	: 44 L
Hydraulic Tank	: 265 L	Engine Cooling System	: 65 L
Hydraulic System	: 470 L	AdBlue	: 70 L

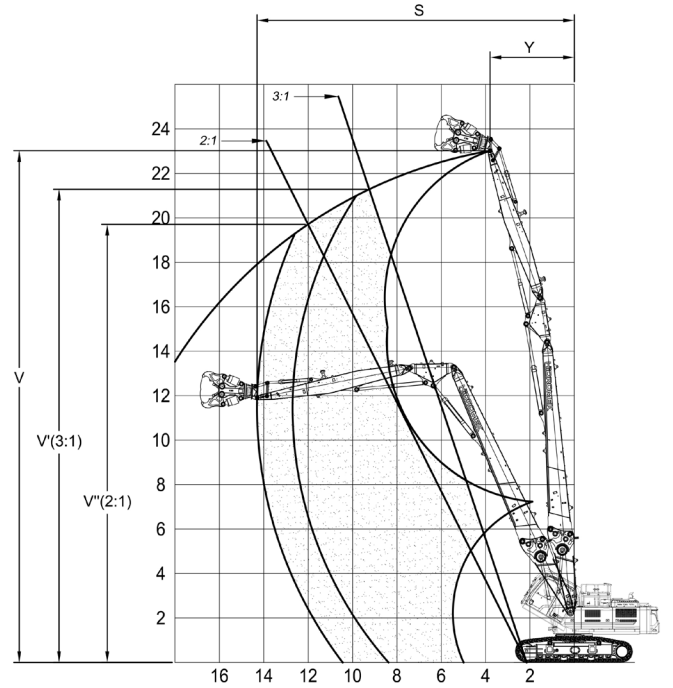
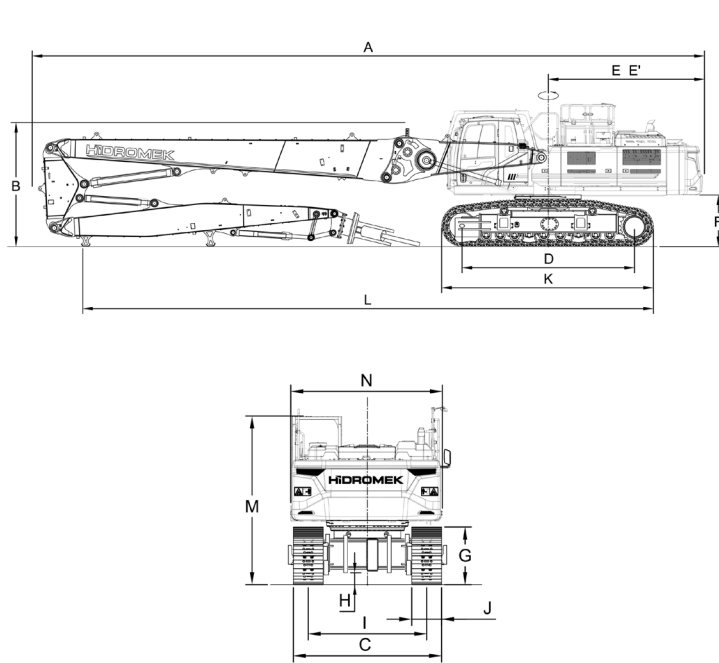
ELECTRICAL SYSTEM

Voltage	: 24 V
Battery	: 2 x 12 V / 150 Ah
Alternator	: 24 V / 50 A
Starting Motor	: 24 V / 5,0 kw

OPERATING WEIGHT

Standard machine operating weight	: 54.500 kg
-----------------------------------	-------------

Operational weight, complying with the ISO 6016 standards, includes full fuel tank, hydraulic system and other liquids, 75 kg operator weight and standard equipped machine weight. Optional equipments are not included.



GENERAL DIMENSIONS

Boom Dimension	12.250 mm
Middle Arm Dimension	2.000 mm
Arm Dimension	7.000 mm
A - Overall length	16.760 mm
B - Overall height of boom	3.090 mm
C - Overall Width (Retracted-Extracted)	2980 mm / 3980 mm
D - Tumbler distance	4.300 mm
E - Rear end length	3.890 mm
E' - Tail swing radius	3.890 mm
F - Counterweight clearance	1.280 mm
G - Crawler height	1.160 mm
H - Minimum ground clearance	240 mm
I - Track gauge (Retracted-Extracted)	2.380 mm / 3.380 mm
J - Shoe width	600 mm
K - Crawler length	5.280 mm
L - Length on ground	14.240 mm
M - Cab height	3.255 mm
N - Upperstructure width	3.050 mm

WORKING DIMENSIONS

Boom Dimension		12.250 mm	
Middle Arm Dimension		2.000 mm	
Arm Dimension		7.000 mm	
		Front Position	Side Position
S	- Max. Pin Reach	14.090 mm	12.490 mm
V	- Max. Pin Height	23.020 mm	
V'	- Max. Pin Height (3:1 Line)	21.280 mm	21.430 mm
V''	- Max. Pin Height (2:1 Line)	19.490 mm	20.810 mm
Y	- Min. Swing Radius at Max. Height	3.800 mm	



HIDROMEK®

FACTORY - HEAD OFFICE

Ahi Evran OSB Mahallesi Osmanlı Caddesi No:1 06935 Sincan / ANKARA / TÜRKİYE
Tel: (+90) 312 267 12 60 Fax: (+90) 312 267 12 39
www.hidromek.com

Notice:
Hidromek has the right to modify the specifications and design of the model indicated on this brochure without prior notice.